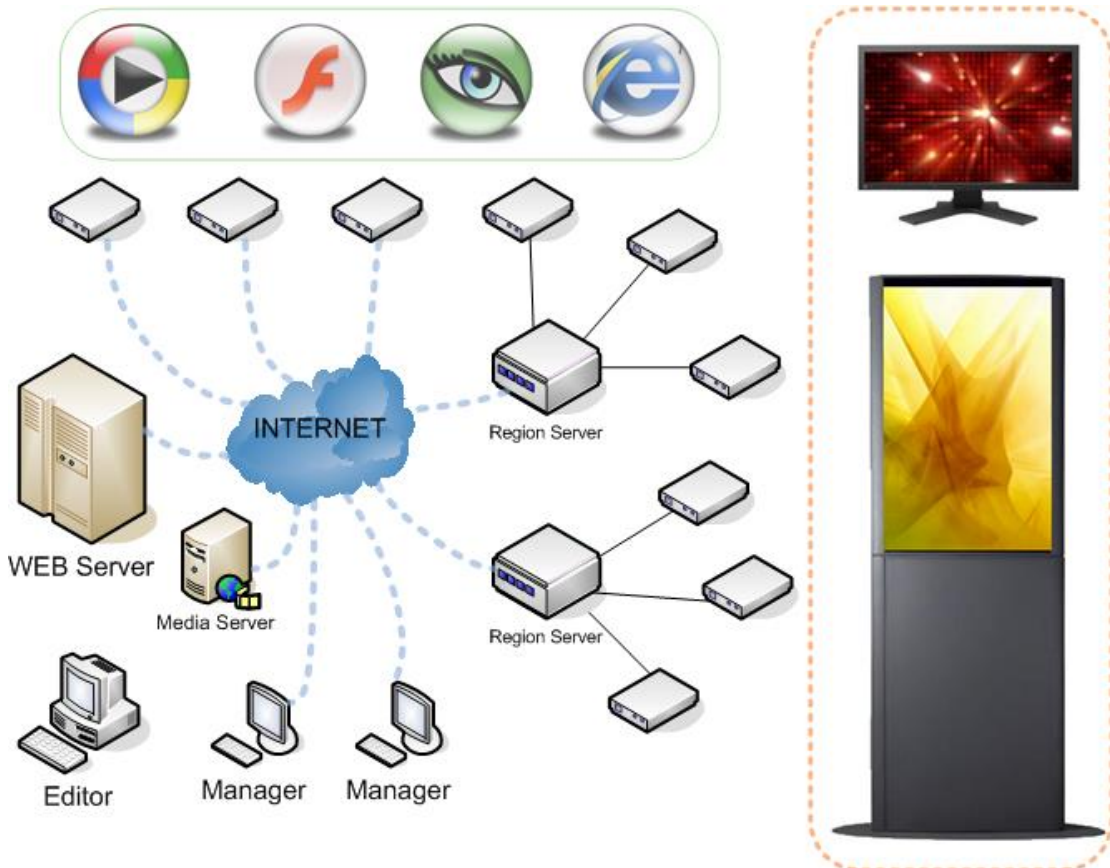


Digital Signage System

1. System Abstract

This is an advertising system which suits for various network operators, it contains advertising programs' edit, distribution, broadcast, management and statistics. It can distribute programs and control the terminal remotely through the Internet, and also possesses rich features to meet different needs of Ad show occasions.



All terminals in this system are monitored and managed by a WEB server, and only need to be connected in the Internet, and then they will communicate with the WEB server automatically. All terminals will feedback their current state to the server regularly, and receive the program files for automatic timing display.

All kinds of media files for advertisement can be uploaded to WEB server when the user distributed programs. Also the files can be uploaded to a separated media server previously to share the burden of WEB server and even can set a region server in one region to achieve that all terminals download the files uniformly. All of these methods are without any complicated settings, and can be transferred arbitrarily when using.

The terminal supports all kinds of files, such as Video, Flash, Picture, Web page and Text display,

as well as logo show, auto volume adjustment, auto shutdown, auto dial-up features. For terminals connected to the Internet, all programs and configuration information can be updated remotely through the network. And of course, all information could be updated manually by the flash-disk.

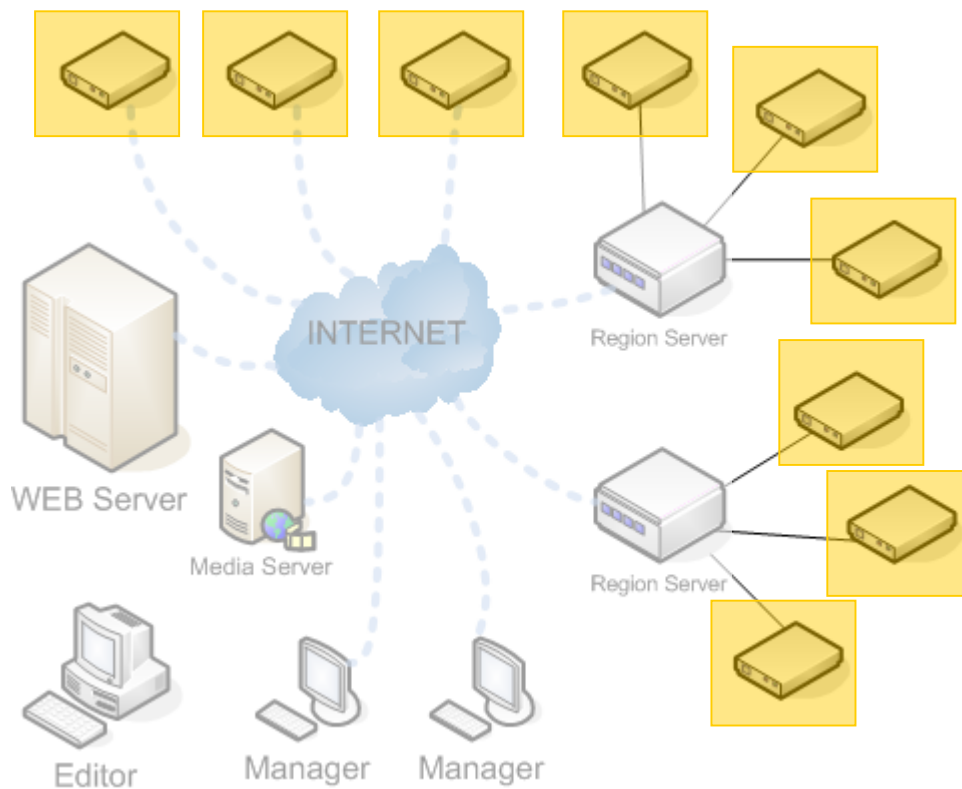
The terminal in this system also supports synchronous display between several terminals to realize the combined screen effect.



Kazo Vision

WEB: <http://www.kazovision.com> MAIL: sales@kazovision.com

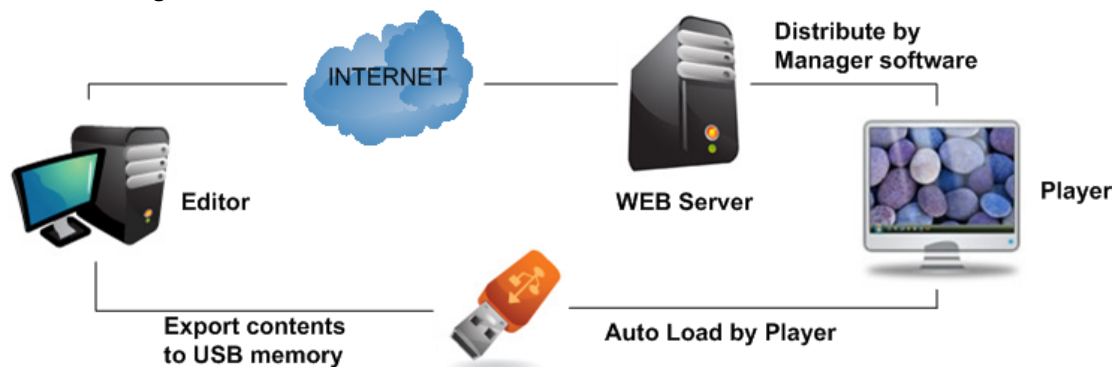
2. Terminal Player



Terminals can run on X86, ARM, MIPS hardware environment by using the Linux operating system. They can segment the output screen into many sub-regions which play different contents by the method defined in program.

2.1 Convenient Program Distribution

You can distribute the programs to all terminals through the network or by manual. The package of programs could be defined specially for one region or terminal. So you only need to editor once for a large number of terminals.



2.2 Support Common Media Format

Support media types include: Video (AVI, MPEG and so on), Flash, Picture, Web Page (Website or Local web pages), and Rolling subtitles.

2.3 Multi-Terminals Synchronous

For several terminals in one region, the contents can be display synchronously, which only need to set a region server in the LAN. Synchronization error is less than 1/3 second.

2.4 Remote or Local Control

All kinds of configuration files can be distributed to the terminal through the network or by plug a flash-disk to the terminal manually. Which includes: update the logo, auto volume adjustment, auto dial-up(support WIFI, GPRS, and CDMA), and auto shutdown.

The terminal also includes a complete local setting feature and the configuration can be modified on terminal directly:

```
VERSION: 1.00 (BUILD: 2010-10-4)
MAC: 00:24:E8:23:0C:53
PCMARK:
NETWORK MODE: LAN
WEB SERVER: http://pymanager.kazovision.com
WEB COMMUNICATE STATUS:
SYNCHRONIZE MODE: OFF
SYNCHRONIZE SERVER:
SYNCHRONIZE COMMUNICATE STATUS:

Main menu:
(0). Modify PCMARK
(1). Modify WEB server address
(2). Modify NTP server address
(3). Modify running mode
(4). Modify synchronize mode
(5). Modify system time
(6). Modify shutdown time
(7). Delete content
(8). Modify password
(9). Shutdown
(10). Reboot
(11). Reset
```

2.5 Statistics

The terminals will statistic in the whole process and feedback the statistical information to the WEB server automatically to sum all terminals statistic. The statistical information can be exported to ERP system and be associated with the business easily.



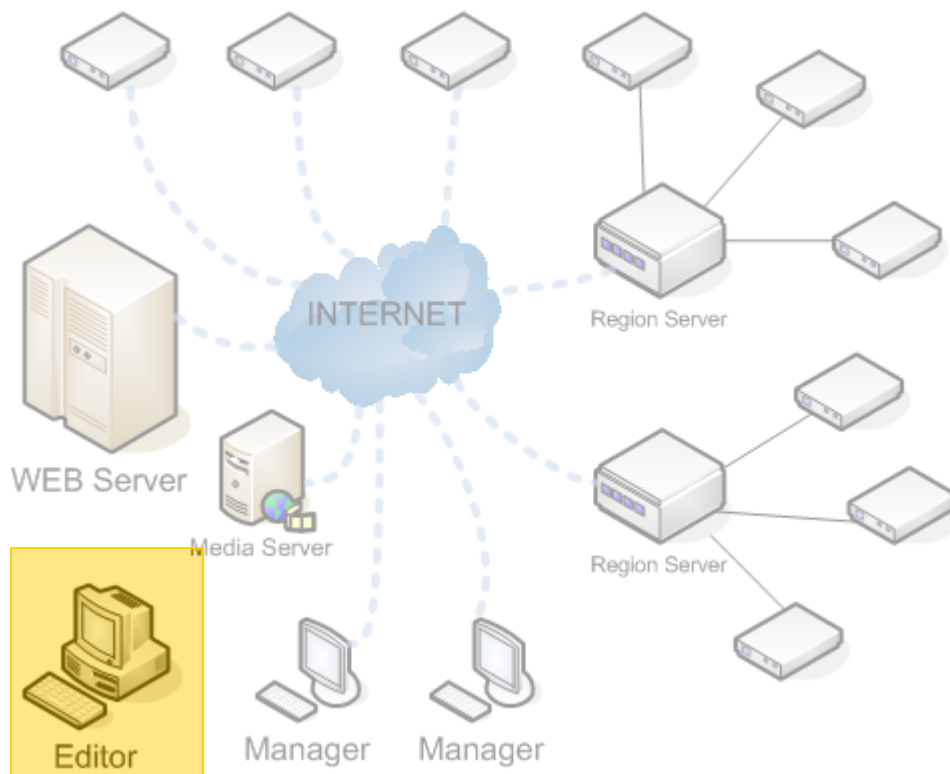
2.6 Fault Tolerance and Security

Terminal is designed for long-term operation in the unattended environment, the software can

automatically detect a variety of hardware and software errors, and feedback to the WEB server, as well as restored automatically in most cases.

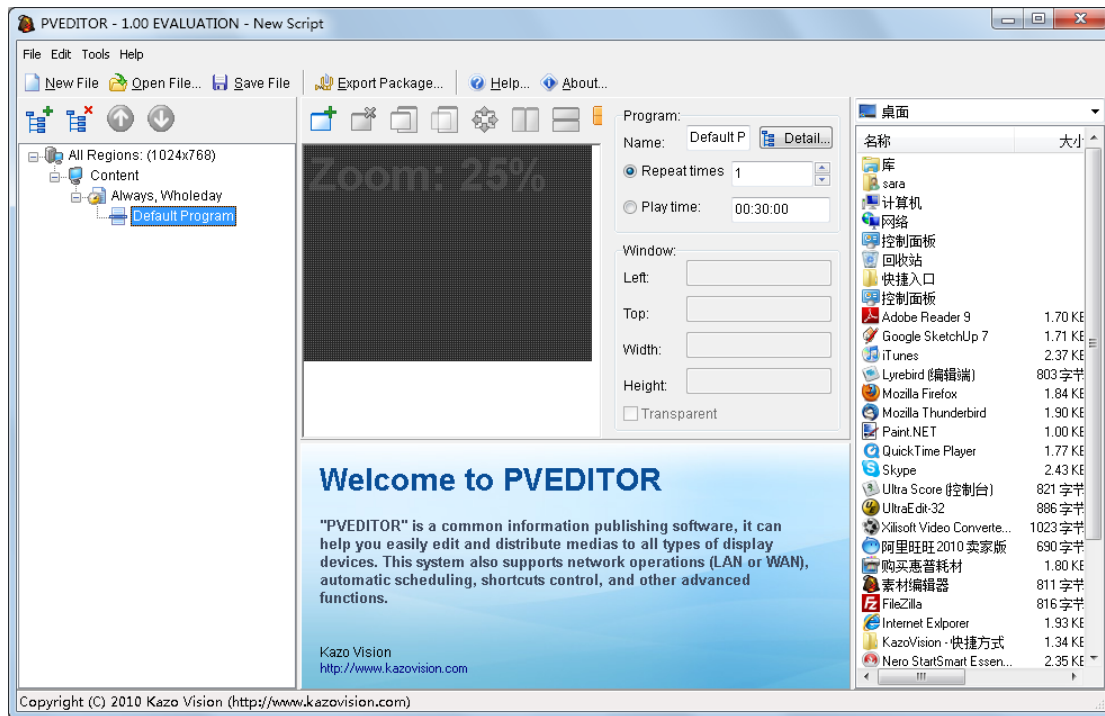
All program files on terminals need to be checked before played to avoid being malicious replacement.

3. Content Editor



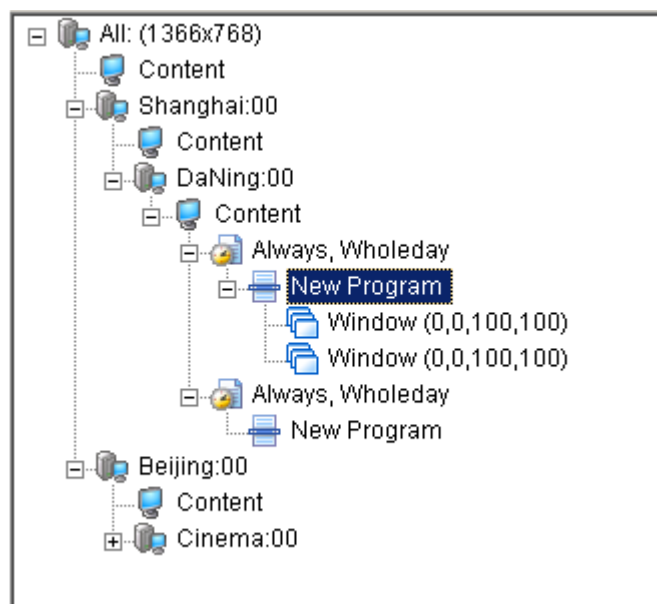
The editor is used for editing the contents of program to define the media's show period and order. In the same time, the editor contains package-export function, which can pack all contents into a separate package after edited; the package can be distributed to all terminals through the network or by manual to achieve the distribution of programs.

The main interface of editing software as follows:



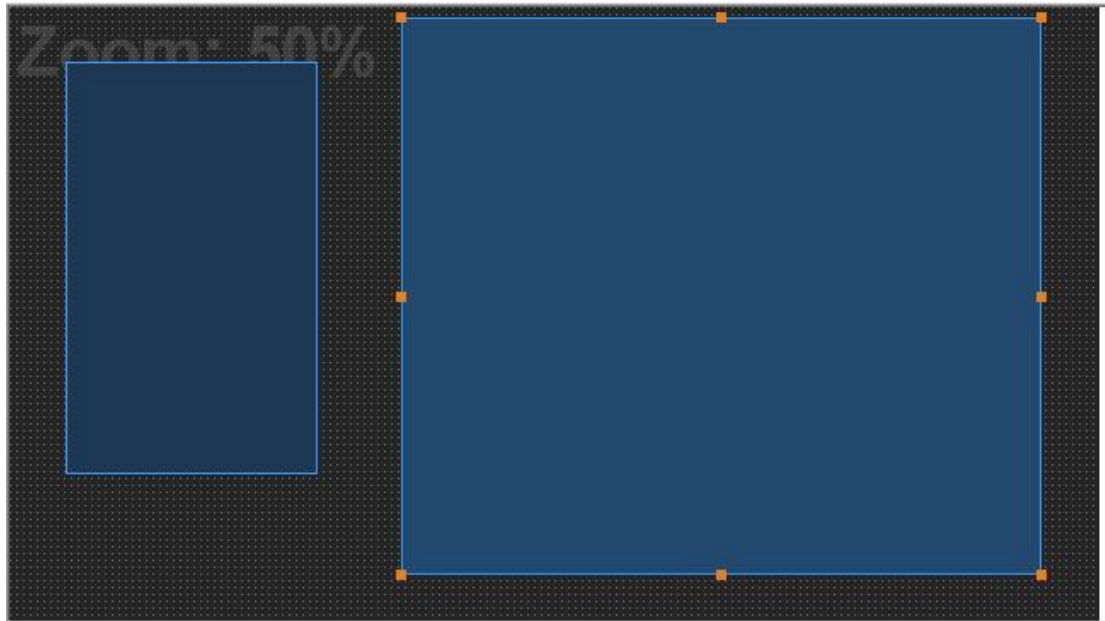
3.1 Multi-Regions Editor

Combining with the regional identities of all terminals, you can edit several cities' or regions' contents one-time on the editor and pack them into one file, all terminals will automatically load matching information to make all programs in several cities and regions can be produced and distributed at one time.



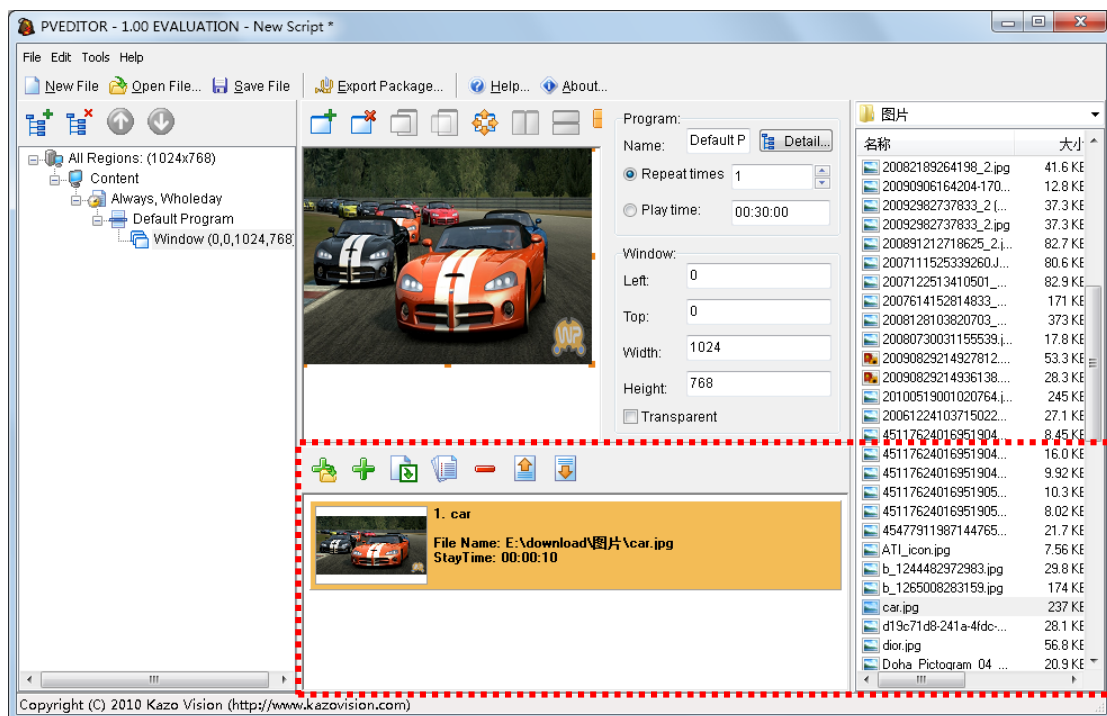
3.2 Visualization Window Segmentation

You can adjust the window location and size directly through the mouse dragging and dropping, and add the media files just drag and drop them directly to the window.



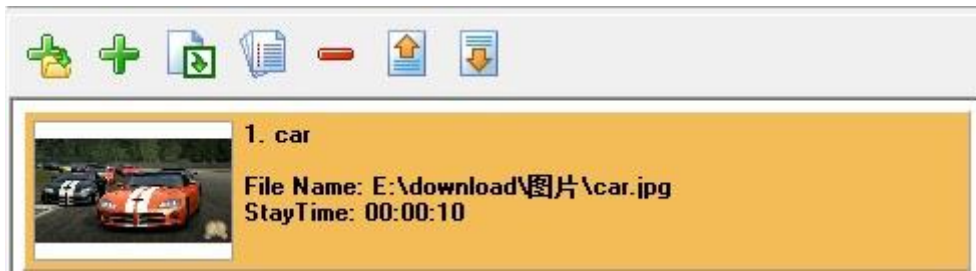
3.3 Convenient Program Addition

Select one window and there will appear a choose panel of media file on the right of editor. You can select any files from your computer rapidly, and also could drag the file and drop it to the left side to add the file into media list.



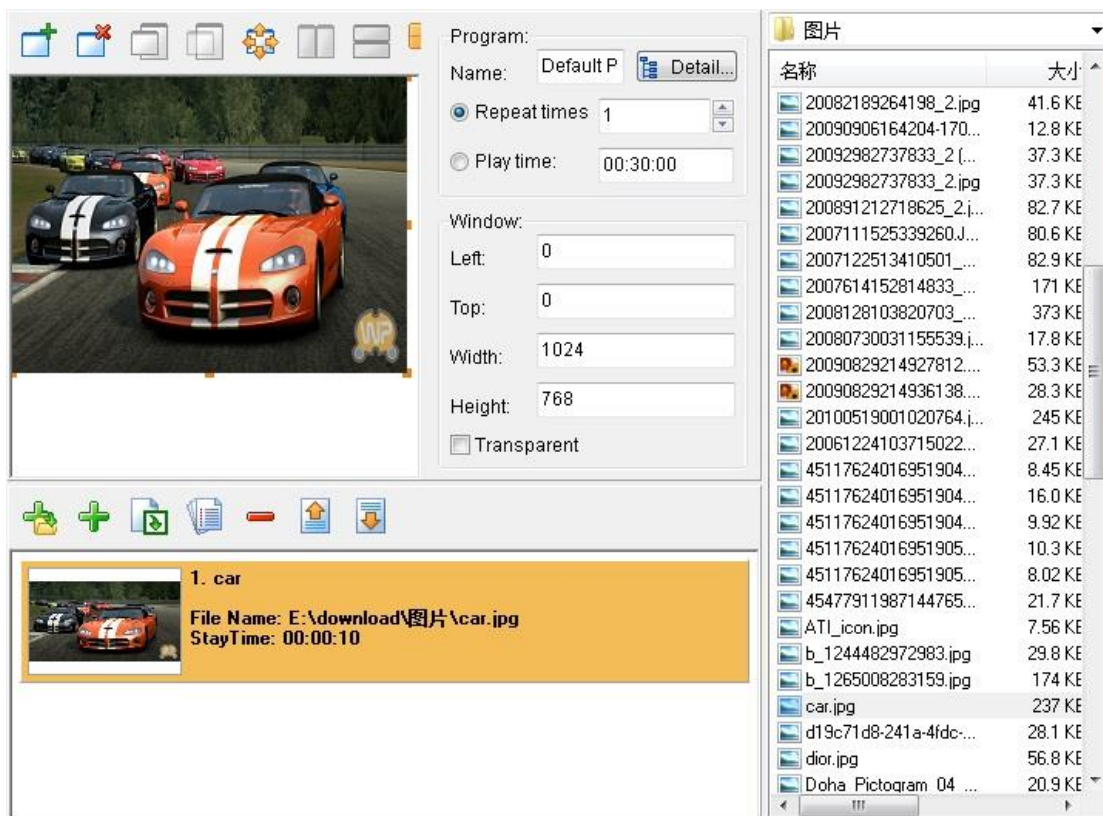
3.4 Visual Media List

The list of media files could see the thumbnail directly, and the files are easy to move and copy paste, you can adjust the media list rapidly.



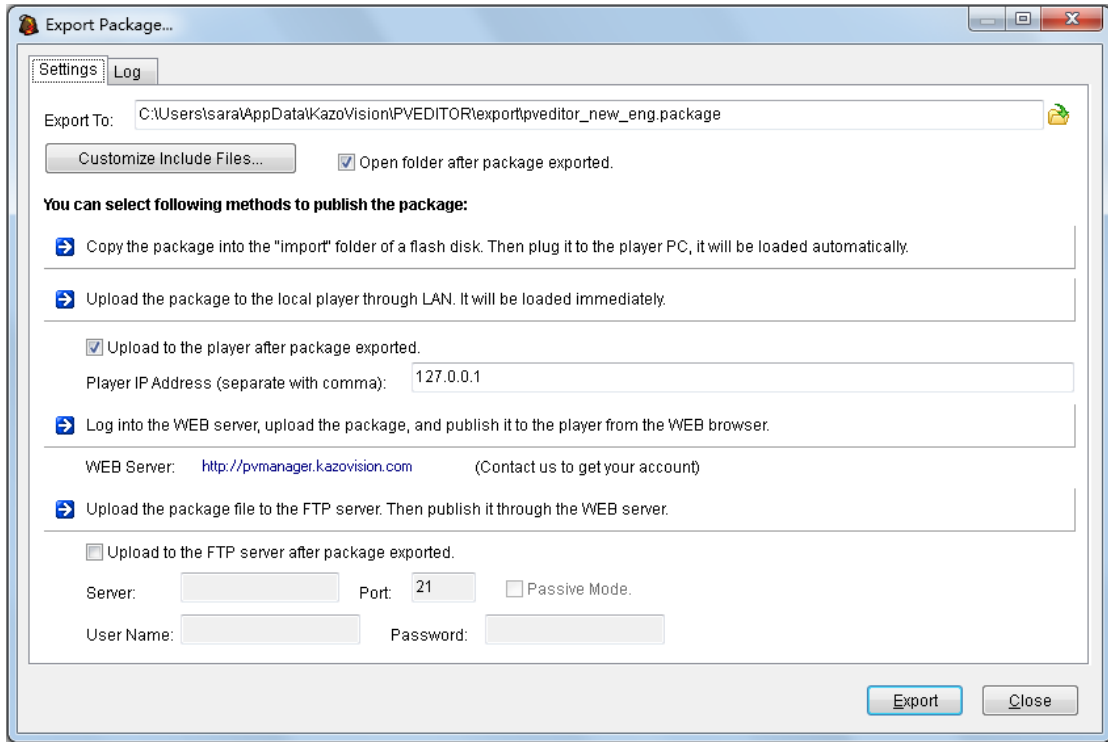
3.5 Media Files Immediately Preview

Click the media files in the list and you will see the corresponding preview in the display window immediately.



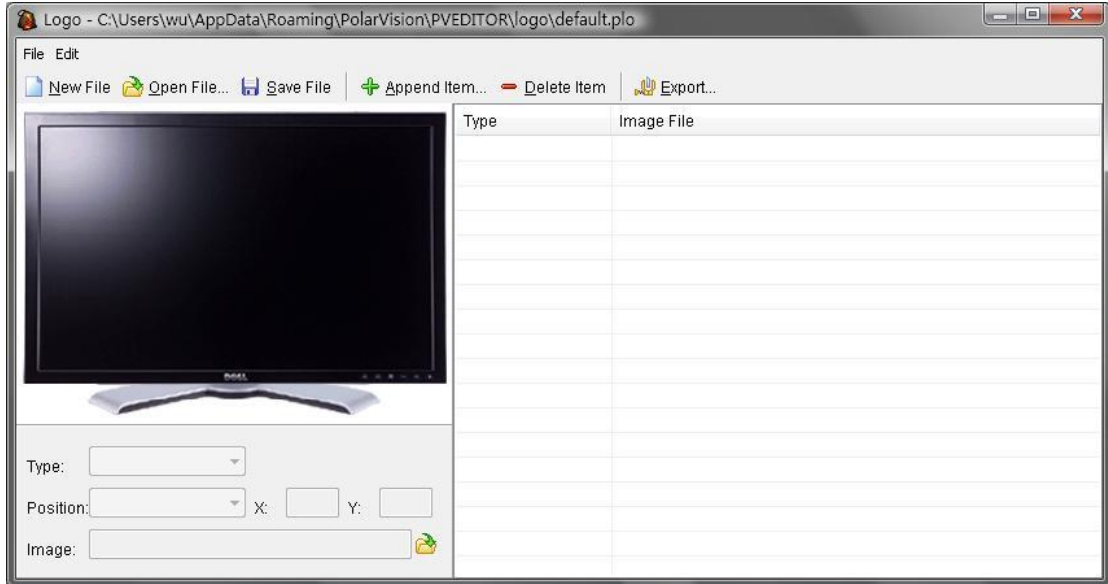
3.6 Export Program Package Easily

Just click the "Export Package" button to export all editorial content into a program package.



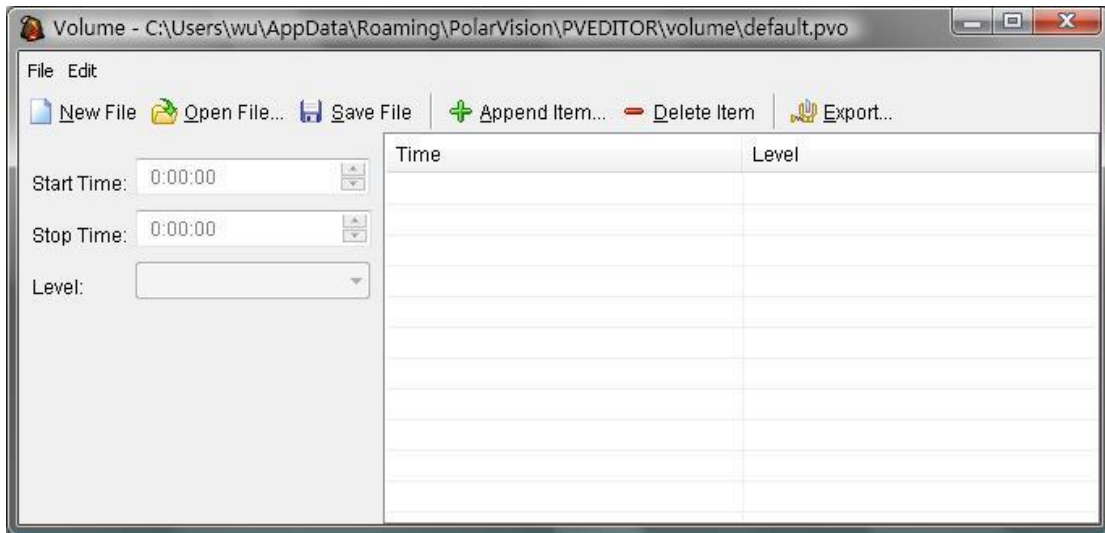
3.7 Logo Editor

You can use this editor to create your own logo and show on the terminal when playing the programs, or show the digital clock on a fixed position.



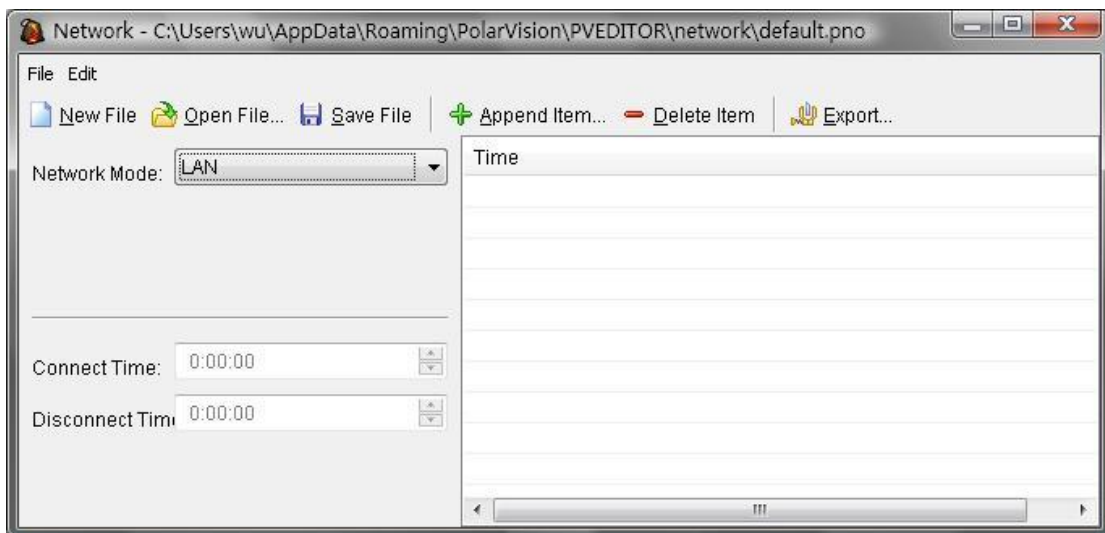
3.8 Volume Editor

You can choose a volume when play the information and set several volume levels for different period.



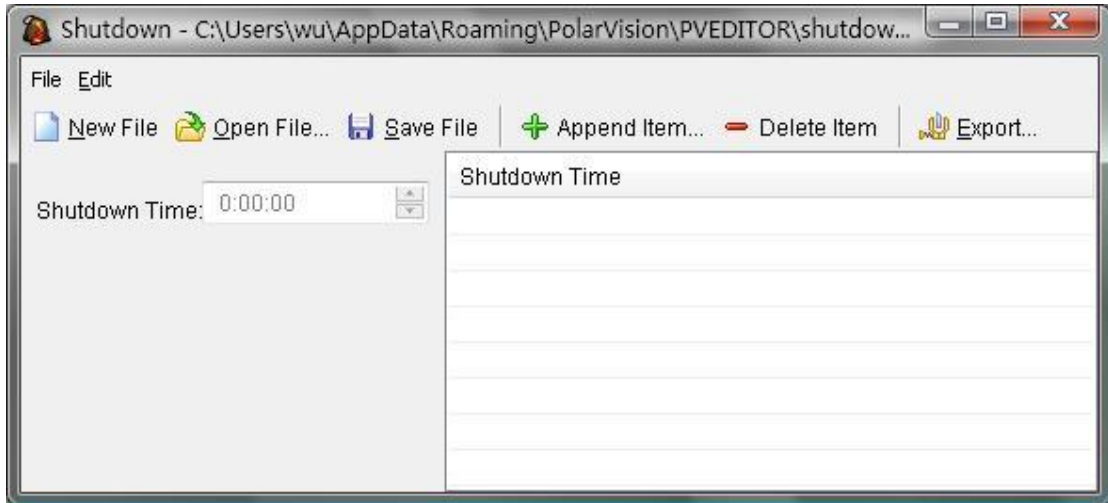
3.9 Network Editor

You can select one network mode to make the terminals connect with internet in specified time. You can set the time of connect and disconnect to make accurate control.



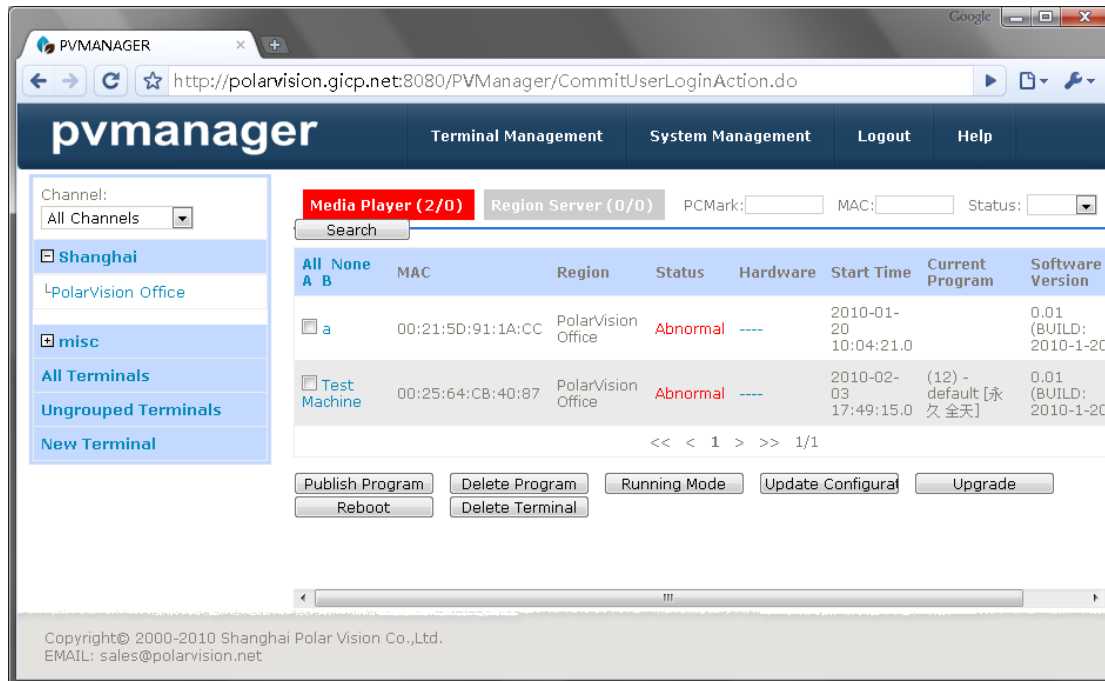
3.10 Shutdown Editor

Choose the "Shutdown Editor" to set the auto shutdown time.



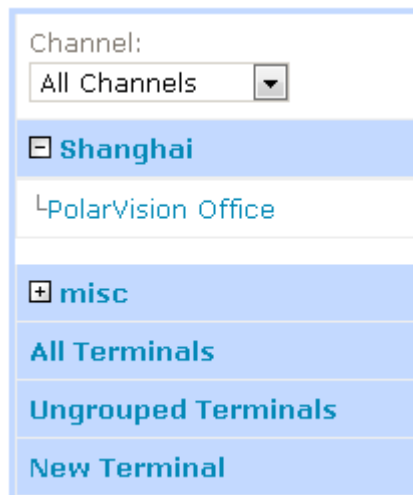
4. WEB Management System

“WEB management” system run on a specified server in the internet, so that it can achieve the control of all terminals which connected Internet, as well as all of the management.



4.1 Multi-levels Terminal Management

Group terminals by “channels and regions” can adapt to the management of large-scale.



4.2 Terminal Condition Monitor

You can monitor the operation of all terminals in real-time through the page of terminal state.

All B	None A	MAC	Region	Status	Hardware	Start Time	Current Program	Software Version	Edit
<input type="checkbox"/>	a	00:21:5D:91:1A:CC	PolarVision Office	Abnormal	----	2010-01-20 10:04:21.0		0.01 (BUILD: 2010-1-20)	Edit
<input type="checkbox"/>	Test Machine	00:25:64:CB:40:87	PolarVision Office	Abnormal	----	2010-02-03 17:49:15.0	(12) - default [永久 全天]	0.01 (BUILD: 2010-1-20)	Edit

<< < 1 > >> 1/1

4.3 Terminal Remote Control

You can implement all kinds of remote operations after selected several terminals to achieve the distribution of programs, modify configuration, and reboot.

<input type="checkbox"/>	Test Machine	00:25:64:CB:40:87	PolarVision Office	Abnormal	----	2010-02-03 17:49:15.0	(12) - default [永久 全天]	0.01 (BUILD: 2010-1-20)	Edit
--------------------------	--------------	-------------------	--------------------	----------	------	-----------------------	------------------------	-------------------------	----------------------

<< < 1 > >> 1/1

4.4 Program Management

Manage all programs which have been delivered and delete them at anytime.

Program Name

Region

<input type="checkbox"/>	Program Name	Status	Execute Status	User	Update Time	Detail
<input type="checkbox"/>	222222	Executing	1 / 1	root	2010-02-08 16:06:09.0	Detail
<input type="checkbox"/>	222	Executing	1 / 1	root	2010-02-08 15:37:51.0	Detail
<input type="checkbox"/>	222	Executing	1 / 1	root	2010-02-08 15:37:21.0	Detail
<input type="checkbox"/>	2222	Executing	1 / 1	root	2010-02-08 15:35:20.0	Detail

<< < 1 > >> 1/1

4.5 Multi-User Authority Management

All staffs have different authority for view or edit terminals in different areas.

<input type="checkbox"/>	User ID	User Name	Phone Number	Edit
<input type="checkbox"/>	root	root		Edit
<input type="checkbox"/>	zhangy	张毅	1234565	Edit

<< < 1 > >> 1/1

4.6 Display Info Statistics

The system will record all display statistics information of programs, so that you can view them or export them to other system easily.

PCMark:
Period: --

PCMark	Caption	Start Time	Stop Time
<< < 1 > >> 1/1			

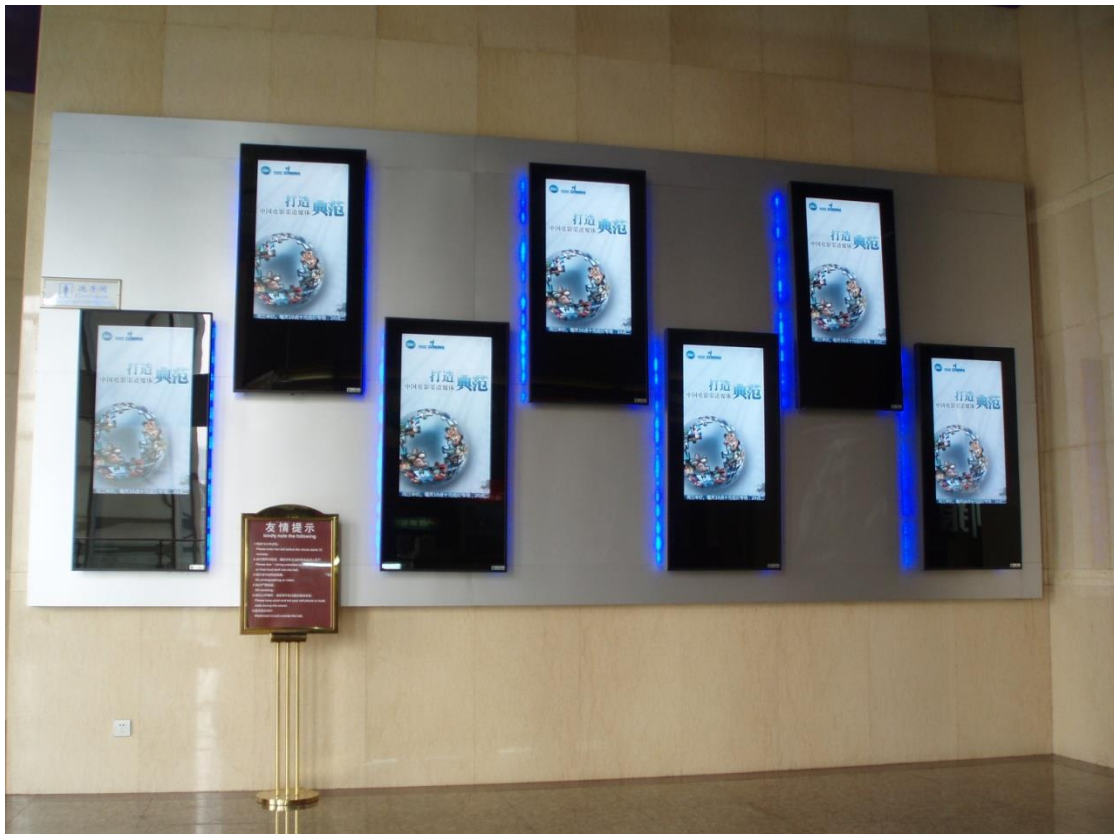
5. Region Server

You can set a region server in one area for unified distribution of programs to reduce the burden of the network when many terminals download program.

Region server can also be used as synchronization server to ensure that the contents on all terminals synchronous.

Region server with state feedback and remote control functions, when it failure, can be abandoned at any time, and directly send program files to the terminal through the WEB server.

6. Success Stories



7. About Kazo Vision

Kazo Vision is a solution provider which focuses on the photo electricity and visual effect. We are providing the software for advertisement, exhibition, and sports field. With our abundant experience in the fields, and our efficient design and development team, by cooperation with the hardware producers and advertisers, we can provide the high quality visual effect to the customer.

With several year development and accumulation, we have mastered most advanced techniques and can accomplish each kind of special visual effect with high efficient and quality in the shortest time. Our professional development team also could make an individual display solution to meet your needs.

We have friendly cooperated with several solution providers in the world wide. Our products are being used around the world. We are also hoping for the cooperation with you in the future.