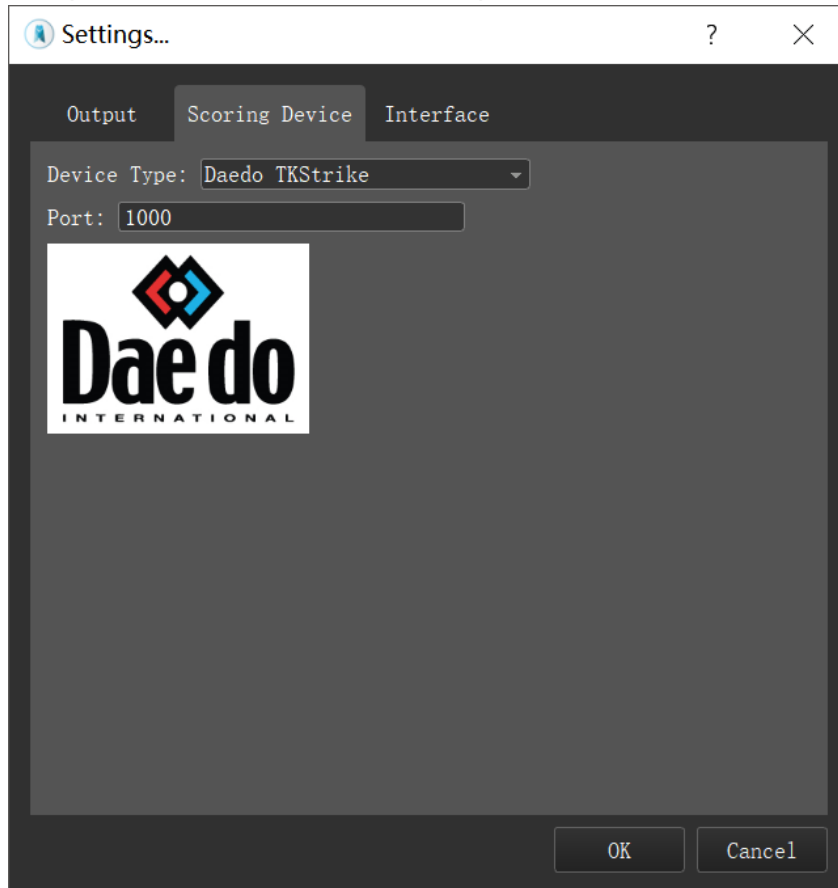


CICADA & Daedo TKStrike

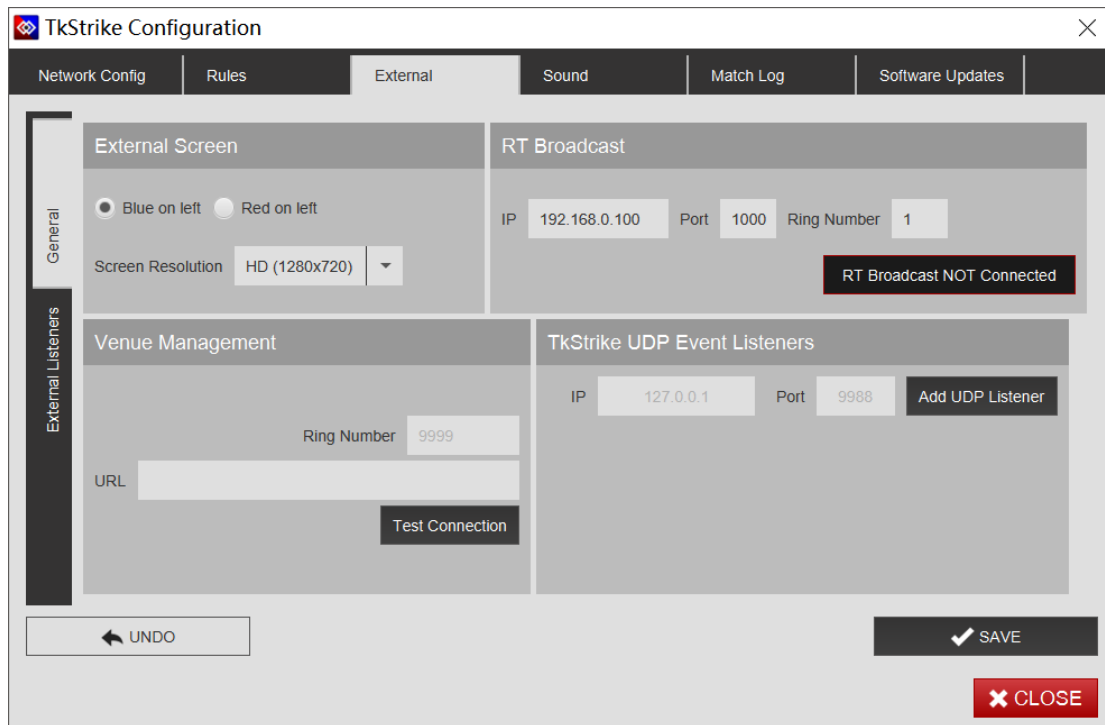
Connection Manual

1. Connecting the software

Setup the Daedo TKStrike network port in CICADA. The default port is 1000.



Go to the "CONFIGURATION" page of TKStrike program. Input the IP address (The IP of PC where CICADA is running on), and the port number (1000 by default) into "RT Broadcast". Then press the "RT Broadcast Not Connected" button. This button will turn to display "RT Broadcast Connected", which means it's connected.



2. The following variables was supported

Name	Description
<i>Match:Category</i>	Category of match. (Ex: Male 56KG)
<i>Match:Round</i>	Round of the game.
<i>Match:Time</i>	The game clock of match.
<i>AthleteA:Name</i>	Name of BLUE athlete.
<i>AthleteB:Name</i>	Name of RED athlete.
<i>AthleteA:Team</i>	Team name of BLUE athlete.
<i>AthleteB:Team</i>	Team name of RED athlete.
<i>AthleteA:Score</i>	Score of BLUE athlete.
<i>AthleteB:Score</i>	Score of RED athlete.
<i>AthleteA:GamJeon</i>	Gam Jeon of BLUE athlete
<i>AthleteB:GamJeon</i>	Gam Jeon of RED athlete.